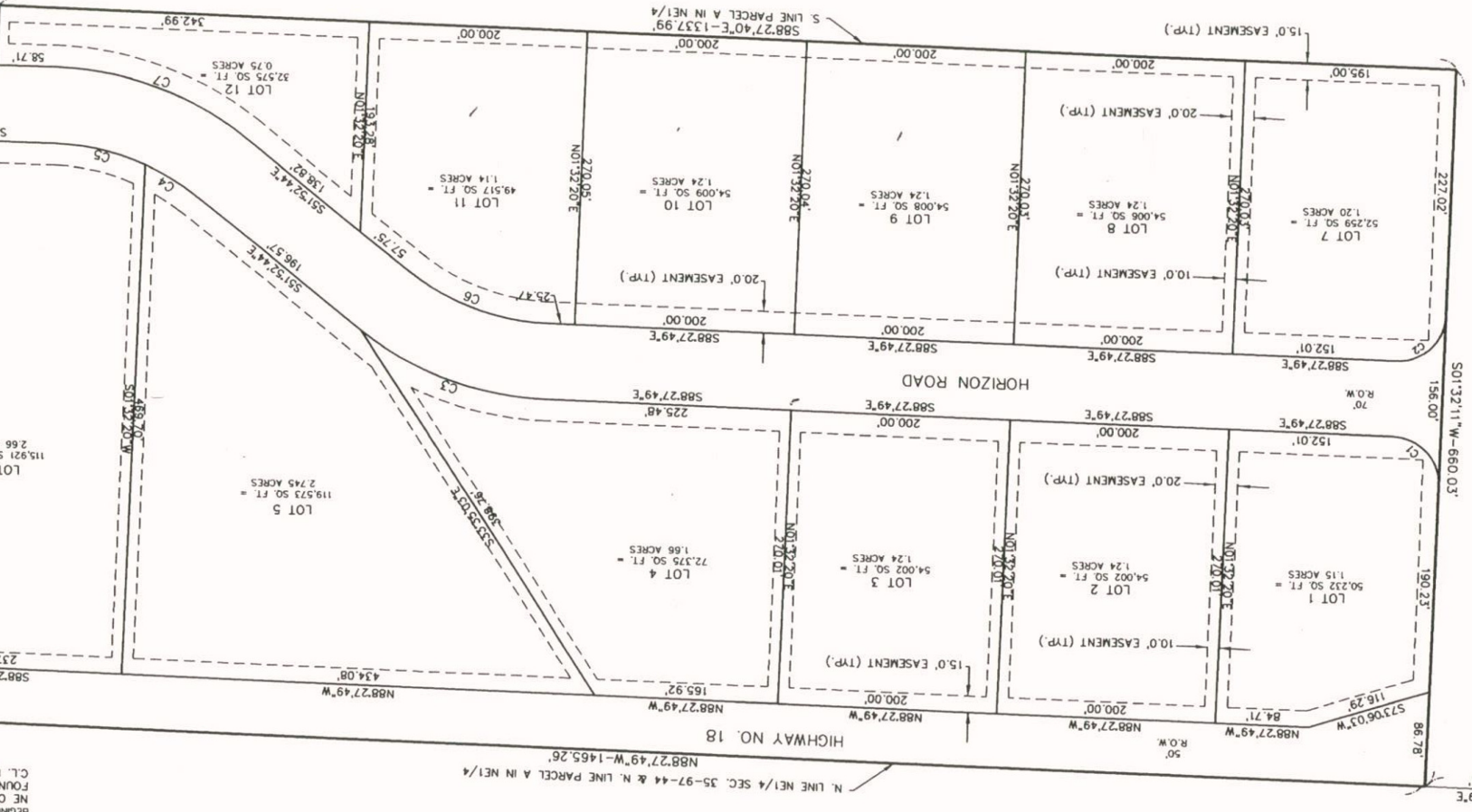


NEW HORIZON FIRST ADDITION  
CITY OF BOYDEN, SIOUX COUNTY, IOWA

N 1/4 CORNER SEC. 35-97-44  
FOUND D.O.T. BRONZE DISK NEAR  
C.L. HIGHWAY NO. 18

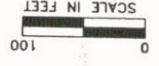
N. LINE NE 1/4 SEC. 35-97-44 & N. LINE PARCEL A IN NE 1/4  
N88°27'49"W-1465.26'

POINT  
BECON  
NE C  
FOUND  
C.L.



CURVE TABLE

CURVE NO.	DELTA	RADIUS ARC	CHORD
C1	90°00'00"	43.00'	67.54'
C2	90°00'00"	43.00'	67.54'
C3	36°35'05"	285.00'	181.98'
C4	14°21'26"	215.00'	53.88'
C5	22°43'26"	215.00'	85.27'
C6	36°35'15"	215.00'	137.29'
C7	37°04'53"	285.00'	184.45'



E 1/4 CORNER SEC.  
FOUND 1/2" REBAR